

A P A R E N T S ' G U I D E T O

ErinBe EDUCATION

H E R I T A G E

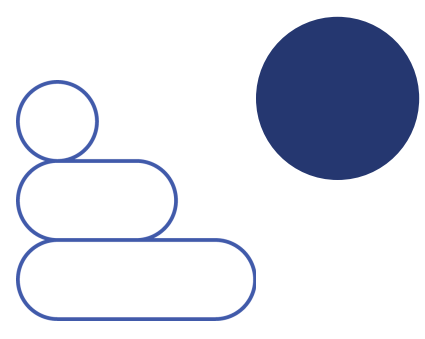




TABLE OF Contents

3	Welcome
5	Classroom Information
14	The EmBe Education Advantage
16	Food Program & Dietary Needs
17	Tuition Rates
18	Billing & Payments
19	Procure App
20	EmBe Education Model for Success
21	Circle of Empowerment
22	EmBe History Timeline
23	Other Opportunities at EmBe

EmBe's beginnings are rooted in meetings in 1921 that formed the YWCA in Sioux Falls, South Dakota. Our vision to serve women and families has remained strong, empowering people to create meaningful and purposeful lives that serve our community well. EmBe has been providing care in Harrisburg for over 2 years, offering School Age Care programming in the schools: Horizon Elementary, Freedom Elementary, Endeavor Elementary, and Liberty Elementary.

MISSION

We uplift the potential in children, women, and families through opportunities that empower all.

VISION

A community where children thrive, women excel, and families succeed.

VALUES

Curiosity
Authenticity
Leadership
Connection



Thank you for choosing EmBe for your childcare needs. EmBe began providing preschool and childcare in 1961 – one of the first centers in Sioux Falls outside of in-home daycares. Since that time, EmBe's award-winning childcare programs have become some of the most respected in the region, with locations throughout the area.

GOALS

- Each child will have a safe, clean, secure environment supervised by caring adults.
- Each child will have a balance of spontaneous and directed play using various materials and equipment to encourage learning.
- Each child shall have an environment that will promote positive self-esteem, social skills, language development, physical and perceptual motor skills.

WELCOME TO

EmBe Education - Heritage

EmBe Education honors children, families, and their teachers by fostering wholistic development focused on character, inherent intelligence, and physical well-being. At EmBe Education-Heritage, we are delighted to offer 5 classrooms of early learning, beginning at birth and continuing until children are ready for Kindergarten.

At EmBe Education-Heritage, we believe that all children are capable of excellence. We use a spiralized curriculum, playful learning experiences, and intentional environments to ensure the best outcomes for each child. In addition to early learning, our Character Curriculum builds the foundation for good communities by emphasizing Autonomy, Generosity, Curiosity, and Love.

EmBe Education-Heritage also offers the opportunity to participate in early education innovation as we launch our Learning Lab and collaborate with Harrisburg High School to give students the opportunity to earn their CDA or collaborate in other ways at the center.

If you have questions or concerns regarding childcare, please contact:



Sarah Meagher
Director of Curriculum and Licensing
Phone: 605-681-8960
Email: smeagher@embe.org



Hello!

So glad to have you in our program!

Meet Our Leadership Team

Kerri Tietgen - CEO



Sarah Meagher

Director of Curriculum
and Licensing

Sarah M. has been working in education and nonprofits for over 10 years. She earned her Masters of Science in Education: Curriculum, Instruction, and Assessment. Sarah loves program development, expansion, and excellence.



Sarah Gaster

Curriculum and
Instruction Coach

Sarah G. is an Elementary certified curriculum and instruction coach. Before joining EmBe, she taught for 10 years at Bishop O'Gorman Elementary Schools. Sarah loves working with teachers, being in classrooms, and facilitating growth.



Chandra VanHout

EmBe Education -
Heritage Site Manager

Chandra brings over 15 years of experience in childcare leadership and as a licensing specialist. She is a dedicated and resourceful professional educator, committed to inspiring and supporting all children by meeting their individual needs and addressing all learning styles.



CLASSROOM

Age Groups



BABES

Birth-12 months

EXPLORERS

8 - 21 months

CREATORS

18 - 36 months

THINKERS

33 - 48 months

SCHOLARS

45 - 60+ months



Each child will be enrolled into the classroom that is most appropriate for them based on their projected graduation date & developmental readiness; ages of classrooms are aligned with the Early Learner Guidelines age ranges.



CLASSROOM Layouts

At EmBe Education, we design each classroom with children in mind - this is their space to play! In addition to academic preparation for Kindergarten, our Character Curriculum focuses on Curiosity, Generosity, Autonomy, and Love.

BABES

AGES

4 weeks - 12 months



SAMPLE
CLASSROOM
LAYOUT



Hello!

So glad to have you in our classroom!

Meet the Babes Lead Teacher
Candice Bierle

ABOUT ME

Background: Bachelors in General Studies, with capstone in children's Art Therapy and Master's Degree in Christian Leadership

Candice is a Heritage Elementary alumna and she is excited to be back in Tiger Territory! Candice has over 10 years of experience in childcare, and is looking forward to being the lead in the infant room.

PASSION STATEMENT:

"I truly believe teaching children is the best job in the whole world. You get to grow alongside them and see their genuine love of learning as they take in the world around them."



Secure your spot in my classroom today!

embe.org/embe-education-heritage



CLASSROOM

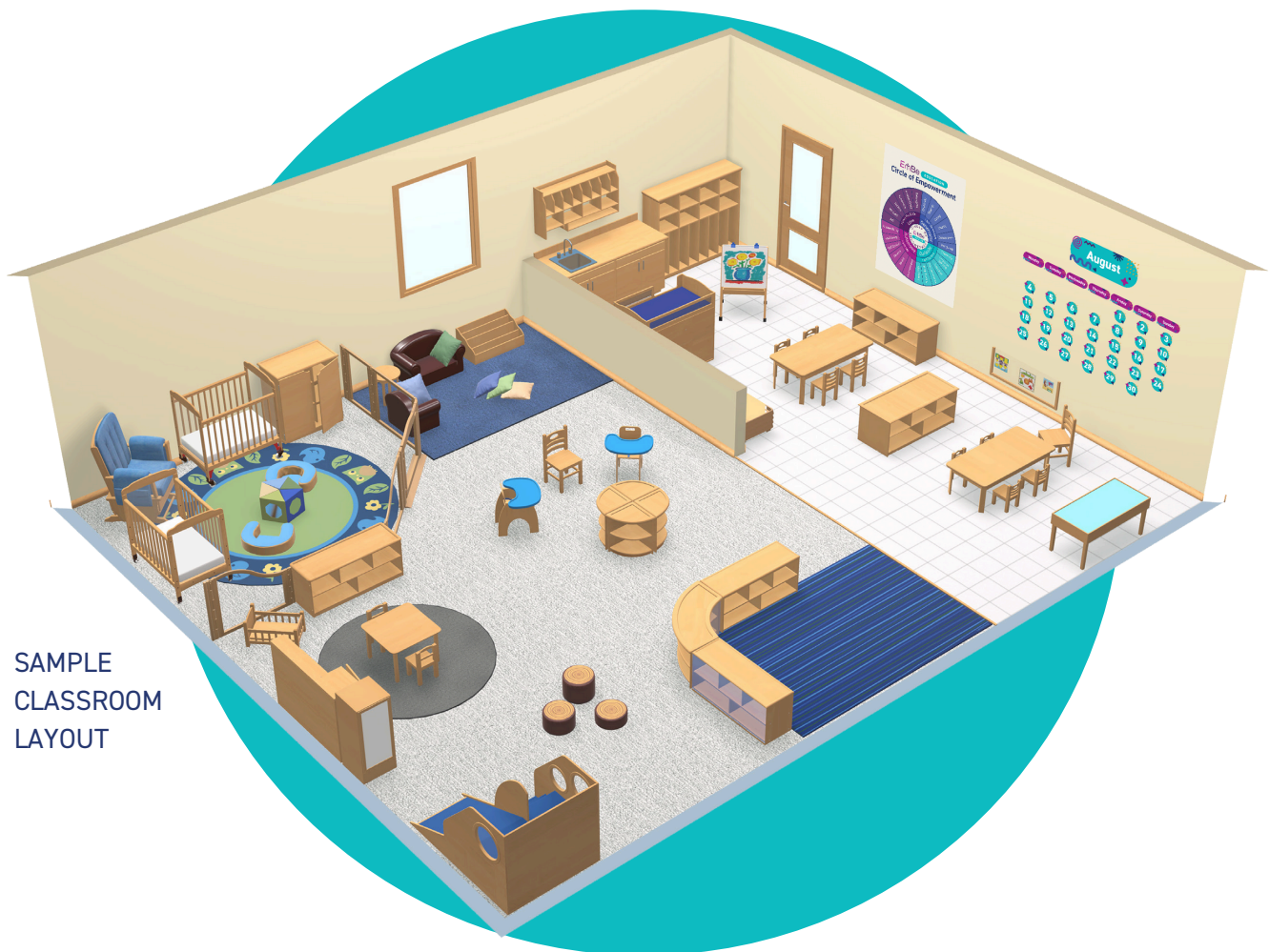
Layouts

At EmBe Education, we design each classroom with children in mind - this is their space to play! In addition to academic preparation for Kindergarten, our Character Curriculum focuses on Curiosity, Generosity, Autonomy, and Love.

EXPLORERS

AGES

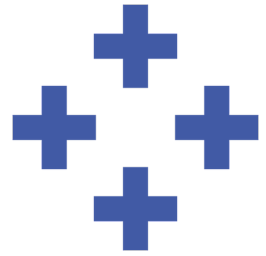
8 - 21 months



SAMPLE
CLASSROOM
LAYOUT



CLASSROOM Layouts



At EmBe Education, we design each classroom with children in mind - this is their space to play! In addition to academic preparation for Kindergarten, our Character Curriculum focuses on Curiosity, Generosity, Autonomy, and Love.

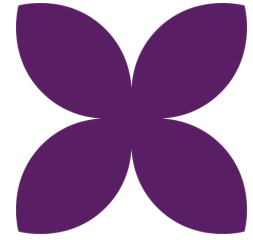
CREATORS

AGES

18 months - 3 years



SAMPLE
CLASSROOM
LAYOUT

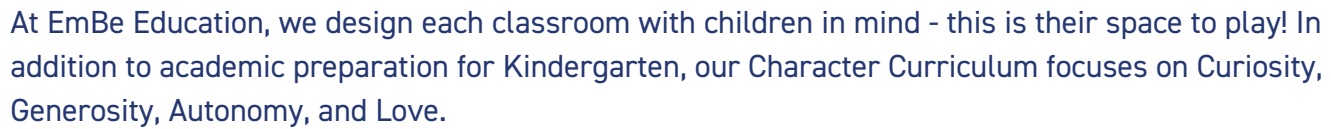


Layouts

THINKERS

2.5 - 4 years





AGES

4 - 5+ years





EmBe EDUCATION

PRESCHOOL



One of the best ways to help children succeed
is to teach them to be confident thinkers.

Our EmBe Education Curriculum for Preschool (ages 3-5) aligns with the Head Start Child Development and Early Learning Framework and South Dakota Early Learning Guidelines. Using play-based learning, children develop confidence, creativity, and lifelong critical thinking skills. EmBe Education works to provide your family with the best services available to prepare your child for Kindergarten and a lifetime of learning.

EXPERIENCE THE ADVANTAGE AT EMBE EDUCATION:

- Our education program focuses on development through intentional curriculum, environments and character growth
- All-day care makes our program more accessible and affordable for parents
- A robust nutrition program with locally sourced meat, fresh and frozen fruits, vegetables, dairy and whole grains included in every meal.



For more information or to enroll, visit embe.org/embe-education-heritage



So much of my child's academic success I attribute to their early start in KinderCollege.

Our daughter has been at EmBe since she started daycare at 8 months old. Now that she is five and will be going to Kindergarten this fall, I look back on our experience with EmBe and I am so thankful that this team of caretakers helped raise my girl into the sweet and fun person she is.

She has always felt that she can be 100% herself at EmBe - and that type of safe space and comfort fosters so much love and happiness."

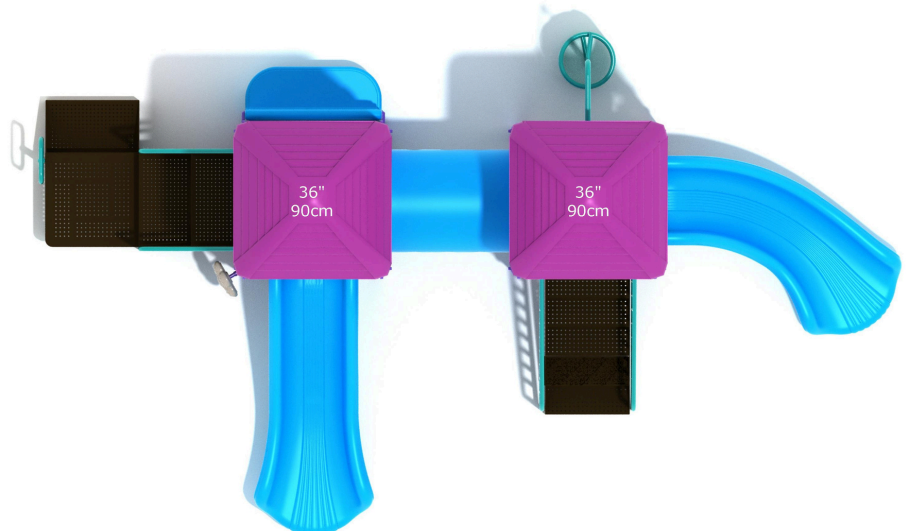
- EmBe South Parent

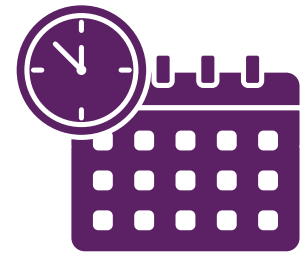


EmBe

PLAYGROUND

Layout





DAILY

Schedule

- 7:00 AM to 4:30 PM, Monday-Friday; EmBe Education-Heritage will offer extended hours until 5:30p.m. as needed! Designed for District staff who coach or have after-school duties. Just note your needs on the enrollment form!
- School days & In-service days

EMBE EDUCATION - HERITAGE Calendar

August

Mo	Tu	We	Th	Fr	Sa	Su
				1	2	3
4	5	6	7	8	9	10
11	12	13	14	15	16	17
18	19	20	21	22	23	24
25	26	27	28	29	30	31

September

Mo	Tu	We	Th	Fr	Sa	Su
1	2	3	4	5	6	7
8	9	10	11	12	13	14
15	16	17	18	19	20	21
22	23	24	25	26	27	28
29	30					

October

Mo	Tu	We	Th	Fr	Sa	Su
		1	2	3	4	5
6	7	8	9	10	11	12
13	14	15	16	17	18	19
20	21	22	23	24	25	26
27	28	29	30	31		

November

Mo	Tu	We	Th	Fr	Sa	Su
						1
2	3	4	5	6	7	8
9	10	11	12	13	14	15
16	17	18	19	20	21	22
23	24	25	26	27	28	29
30						

December

Mo	Tu	We	Th	Fr	Sa	Su
1	2	3	4	5	6	7
8	9	10	11	12	13	14
15	16	17	18	19	20	21
22	23	24	25	26	27	28
29	30	31				

January

Mo	Tu	We	Th	Fr	Sa	Su
				1	2	3
4	5	6	7	8	9	10
11	12	13	14	15	16	17
18	19	20	21	22	23	24
25	26	27	28	29	30	31

February

Mo	Tu	We	Th	Fr	Sa	Su
						1
2	3	4	5	6	7	8
9	10	11	12	13	14	15
16	17	18	19	20	21	22
23	24	25	26	27	28	

March

Mo	Tu	We	Th	Fr	Sa	Su
						1
2	3	4	5	6	7	8
9	10	11	12	13	14	15
16	17	18	19	20	21	22
23	24	25	26	27	28	29
30	31					

April

Mo	Tu	We	Th	Fr	Sa	Su
		1	2	3	4	5
6	7	8	9	10	11	12
13	14	15	16	17	18	19
20	21	22	23	24	25	26
27	28	29	30			

May

Mo	Tu	We	Th	Fr	Sa	Su
				1	2	3
4	5	6	7	8	9	10
11	12	13	14	15	16	17
18	19	20	21	22	23	24
25	26	27	28	29	30	31

Tentative first day of care - August 11

CLOSED THE FOLLOWING DAYS:

- September 1
- October 13
- November 26-28
- December 22 - January 2
- February 13 and 16
- March 12 and 13
- April 3 and 6
- Last day of care May 22

The EmBe Education Advantage

Building Foundations for Kindergarten Readiness and Lifelong Success

Kindergarten Readiness

From birth, our curriculum supports and prepares children on their path to kindergarten.



Bright Beginnings Start Here

Our nurturing, safe, and engaging classrooms support your child's development from day one—laying the foundation for a lifelong love of learning.

Nutrition Matters

Our meal program follows strict nutrition guidelines, ensuring children get the fuel they need to learn and grow.



Lifelong Character Development

EmBe prioritizes curiosity, generosity, autonomy, and love, empowering children for the rest of their lives.



Intentional Environments

EmBe focuses on child-centered environments that foster creativity and exploration.

Accessible and Inclusive

We are committed to making high-quality preschool accessible to more families, helping meet the growing childcare needs of our community.



The EmBe Education - Heritage Advantage

Licensed Ratios

Licensed staff-to-child ratios of 1:5 for classroom ages 0-2, 1:10 for 3 and older, launching with a strong enrollment of at least 75 children.



Designed for You

Flexible scheduling that meets your family's needs, including extended hours and no tuition during the summer months. Hours are 7:00-4:30, with an option for extended care until 5:30 as needed.

Creating Future Educators

Hands-on career exploration opportunities in education and child development for high school students—building the next generation of educators.

CCA Support

Expert support from one of the best teams in the state to help families navigate and qualify for Child Care Assistance.



Quality, Accessible Care

Exceptional, high-quality care at a lower cost—families can save almost \$5,000 annually compared to other childcare centers and unmatched reliability you can't get with an in-home.



Intentional Schedule

Our schedule makes sure children get what they need throughout the day; plenty of play, outdoor time, fun learning and 0 screen time before preschool.

In preschool, brand new promethean boards allow children to actively engage with technology.



"As someone who understands the critical role early learning plays in long-term student success, I see EmBe Education-Heritage as more than a child care center—it's a powerful investment in our children, our educators, and our workforce. With \$300,000 in South Dakota workforce grant funding supporting this effort, I'm proud to see our District lead the way in creating real, lasting solutions for working families."

- Dr. Jennifer Lowery

HARRISBURG SCHOOL DISTRICT SUPERINTENDENT



FOOD PROGRAM & **Dietary Needs**

EmBe participates in the Child and Adult Nutrition Services' Child and Adult Care Feeding Program (CACFP). EmBe follows CACFP meal pattern requirements for every meal service. Serving size is adjusted according to the age of the child. EmBe takes pride in being able to provide nutritious meals that 50% of the time or more are made from unprocessed foods and locally sourced meat. Our lunch menu has more than 45 different meals in rotation.

If a meal or snack is brought in, it must be clearly labeled with the child's name. Food will be refrigerated if necessary and served by staff while following appropriate health procedures. EmBe does not heat food that EmBe does not provide.

EmBe is a nut-safe facility. Please keep this in mind when packing a lunch or snack for your child or the classroom. If a child has a food allergy, EmBe must have a doctor's note stating the allergy's specifics and a meal change form. This form can be provided at the front desk.

PLEASE NOTE: At the time of initial enrollment, all families must complete the CACFP Application for Free & Reduced Meals, regardless of eligibility. Please complete and return to the front desk.



If you have questions or concerns regarding your child's nutritional needs, please contact:



Amber Hodkinson
Food Service Compliance Manager
Phone: 605-951-9678
Email: ahodkinson@embe.org



TUITION Rates



TUITION

- \$265.00/week per child

We have calculated the total cost of care over the year, and divided it evenly from August - May. Therefore, tuition will be billed for the same rate each week for the year, beginning the week of August 11 and ending the week of May 18. This ensures a consistent billing cycle.

FEES

- Application fee: \$150
- An annual \$50 registration fee is required to renew your spot the next fall

Application and Annual Fees help to support the start-up costs of classroom supplies and materials with each school year. These fees are non-refundable. Enrollment is contingent on employment with the Harrisburg School District. EmBe accepts Child Care Assistance through the state of South Dakota, according to income guidelines. Please call Sadie Mudder for any questions regarding childcare assistance or application fees.



Enrollment opens June 12, 2025 at
embe.org/embe-education-heritage

If you have questions or concerns regarding enrollment, please contact:



Sadie Mudder
Customer Service & Billing Manager
Phone: 605-299-2511
Email: smudder@embe.org



BILLING &

Payments



TUITION

Tuition is collected through an EFT (Electronic Funds Transfer) from the parent/guardian account to EmBe through Tuition Express.

- A payment method is collected during enrollment and used for registration fees.
- It is kept on file and automatically charged each Monday for the current week's tuition expenses so no action is needed by the family week to week.
- If Monday is a bank holiday, tuition charges will be processed the next business day.
- If the payment method is declined, a \$35 decline fee will be added to your account and you will be notified by email.
- A link can be requested from the front desk at anytime to update a payment method. You cannot update the payment method through the Procure app as it does not reflect on our end.
- Tuition rates are subject to change, please confirm rates prior to starting.

STATEMENTS

Statements are available at myprocare.com. Please note this is different from the Procure app.

CHILD CARE ASSISTANCE

EmBe accepts Child Care Assistance through the South Dakota Department of Social Services. Applications can be found at dss.sd.gov.

TERMINATION/WITHDRAWAL

EmBe requires a two-week notice when withdrawing. When appropriate notice is not given, the account will be charged for two weeks of service, even if the child(ren) may not be attending. The withdrawal form can be found on our website.

If you have questions or concerns regarding your billing, please contact:



Sadie Mudder

Customer Service & Billing Manager

Phone: 605-299-2511

Email: smudder@embe.org



CAREGIVER CONNECTION

Procare

Procare is an app EmBe uses to help families stay connected with their child(ren) throughout the day.

SIGN-UP

Parents/Legal Guardians that provided an email address on the enrollment form will receive an email invite to sign up for the app on their child(ren)'s first day. The email will come from Procare, not EmBe.

DAILY SIGN-IN/OUT

Parents/Legal Guardians must sign in their child(ren) through the Procare app on the site iPad. The site iPad can be found on the welcome table near the entrance, or a staff member can help locate it. Authorized pick-ups must sign out their child(ren) at the end of the day.

MESSAGING

Procare has two-way messaging capabilities so you can communicate directly with your site regarding your child's health, schedule, upcoming activities, etc.

UPDATES

To set up additional people with the app, add/remove authorized pick-ups, or update personal information, please get in touch with the Customer Service & Billing Manager.



Hello Stephanie Carter,

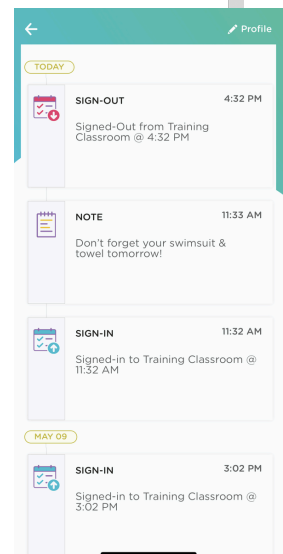
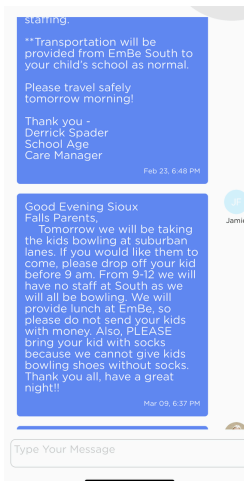
Casey Child Care will be using Procare to stay connected with parents. You have been added to Jenna Carter's profile. Please follow the steps below to get started.

1. Download the free [iPhone/iPad](#) or [Android](#) app, or sign up on [Web](#).
2. Choose **Sign Up**, then **Parent**.
3. Click **"Add Child"** and enter this 10 character code: **5F42E02DA4**. (code will expire in one week)

Once signed up, you'll be able to receive photos, videos, messages, and updates about your child's daily activities. Anytime your child is dropped off or picked up, you'll know. You can also set up automatic online billing once your school is set up.

Learn more about [Procare](#) here. If you have any questions, visit our [Help Center](#).

Thank you,
Procare Solutions Team



If you have questions or concerns regarding your billing, please contact:



Sadie Mudder
Customer Service & Billing Manager
Phone: 605-299-2511
Email: smudder@embe.org



EMBE EDUCATION

Model for Success



At EmBe, we believe education transforms lives and strengthens communities. Our mission is to provide inclusive, innovative programs that empower children, women, and families. EmBe Education drives workforce development, family stability, and lifelong learning through high-quality childcare and education.

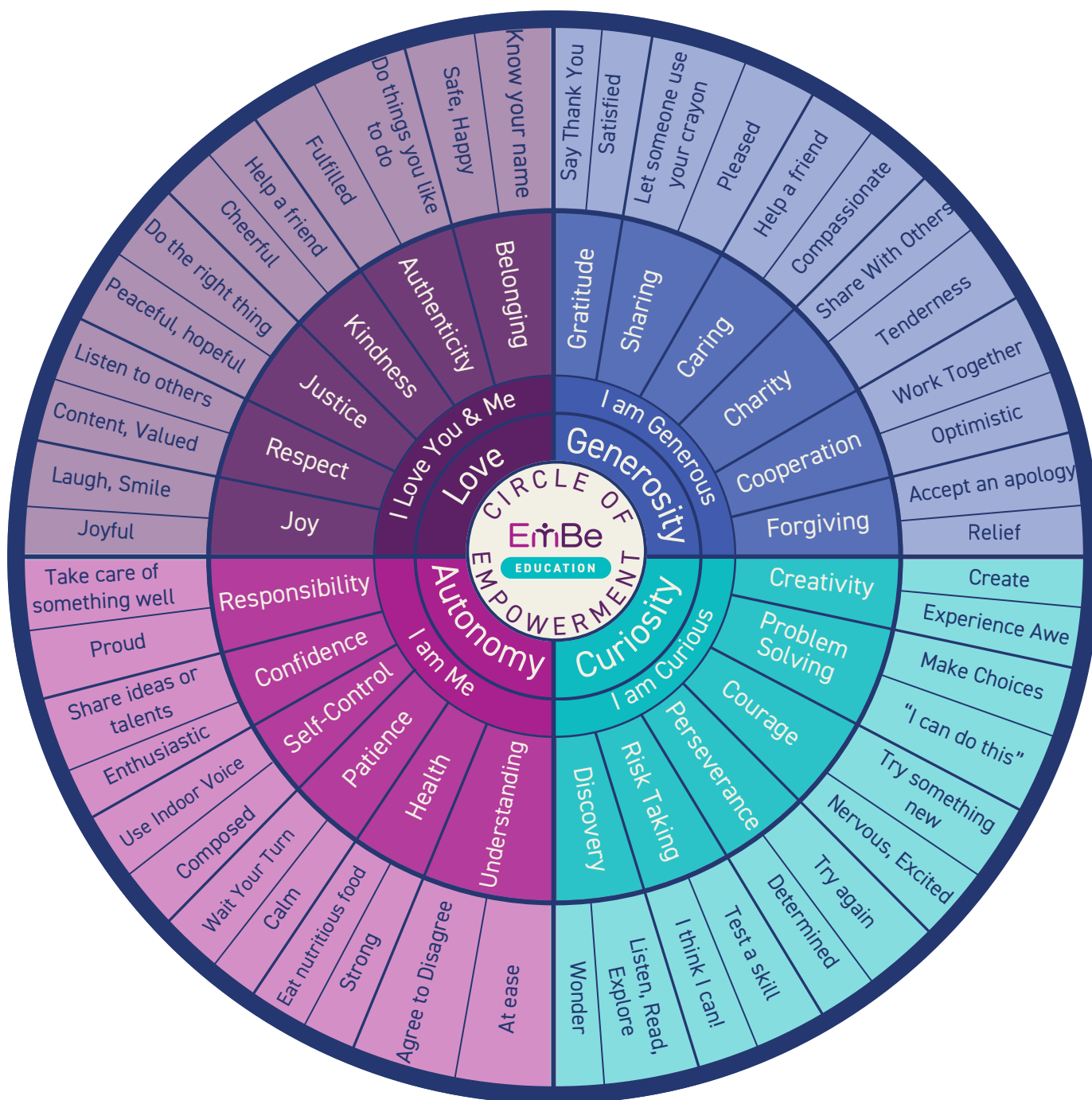
Our model is like a house—rooted in a strong foundation uplifted by donors, parents, community partners, and skilled educators, ensuring exceptional care and learning. This collective strength supports our commitment to quality, nutrition, and supportive work environments. At the peak is our curriculum—a dynamic, expert-designed approach tailored to meet community needs.





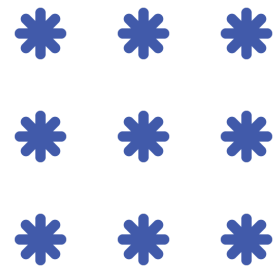
CIRCLE OF

Empowerment

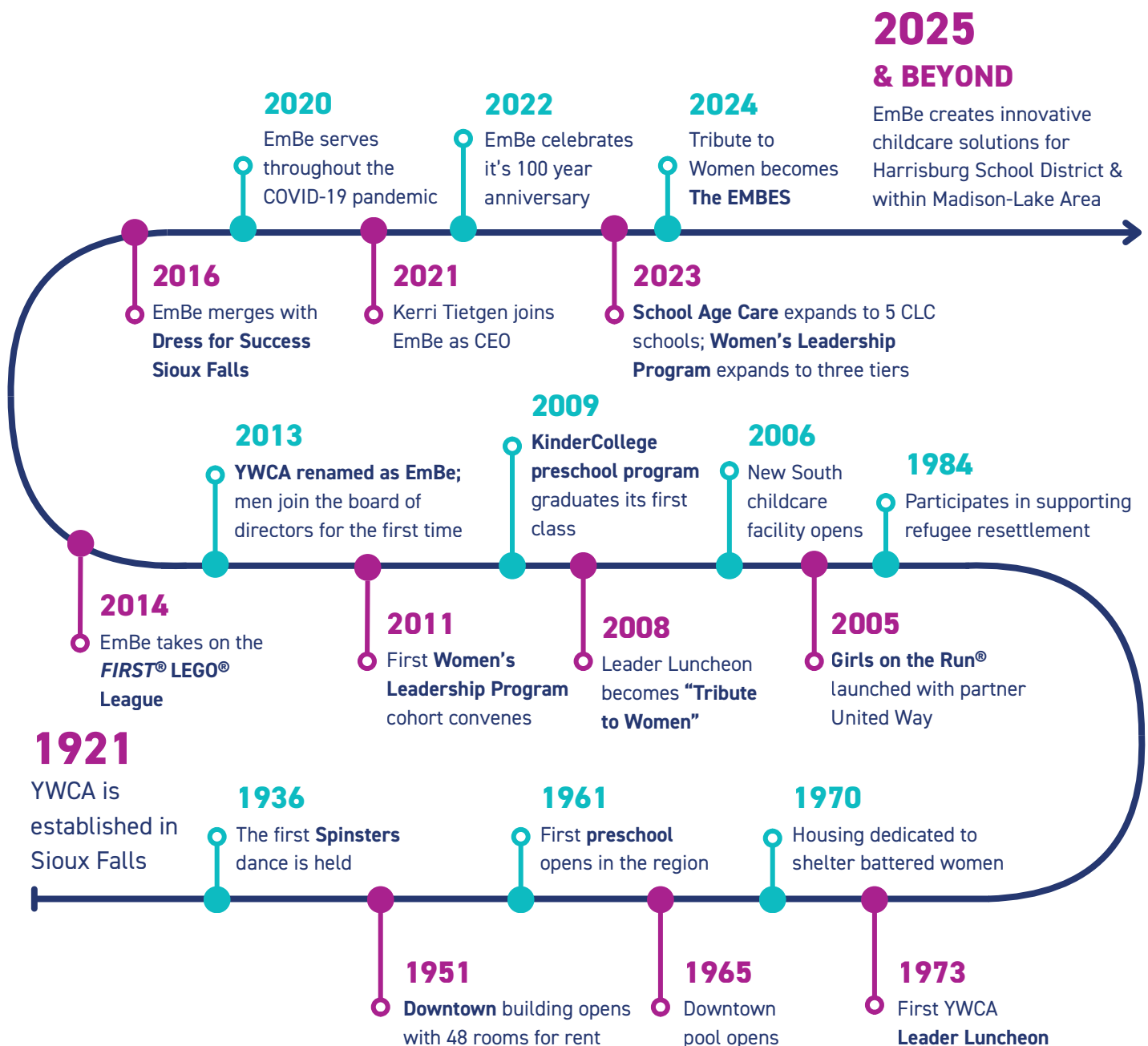




LEADING THE WAY Since 1921



EmBe's vision to provide resources and support for women and families was established in 1921 by its founders, originally as the YWCA. This vision continues to guide our efforts for a community where children thrive, women excel, and families succeed.





OTHER OPPORTUNITIES at EmBe



EmBe YOUTH

Our legacy of providing fun and meaningful activities began in the 1920s. Over the years, we've watched children grow through our programs, camps, and recreational sports. Our programs help children gain confidence, develop new friendships, and learn valuable lessons in teamwork and responsibility.

Summer Youth Camps (Grades 1-8)
Girls on the Run® (Grades 3-5)
Taekwondo (Ages 3+)
Volleyball (Grades 3-6)

For more information about our Youth programs, contact Jasmina Miller at jnmiller@embe.org.

EmBe AQUATICS

From the first lesson to triathlon training, we teach our swimmers to feel safe and confident in their swimming ability. EmBe leads the Sioux Falls aquatics community with our expert instruction, guidance, and training of the best aquatics instructors in the region.

Public Swim Lessons (Ages 6 Months+)
Private Swim Lessons (Ages 3+)
Lifeguard Training
Water Safety Instructor Training
Aquatics Memberships

For more information about our Aquatics programs, contact Abbie Griffin at agriffin@embe.org.

EmBe WOMEN

EmBe leads by empowering women. As the region's oldest and largest women's organization, we assist women of all ages and stages of their lives. If you're re-entering the workforce, looking to support your leadership abilities or connecting to your community by giving back- it all starts here.

Our partnership with Dress for Success - Sioux Falls brings additional opportunities to support women in their journey toward financial independence and to help women thrive in work and life.

Women's Leadership Program
Level Up Lunches
Career Network
Making Cent\$ Financial Literacy

Dress for Success:

- Boutique Styling
- Career Counseling
- Resume Review
- Mock Interviews
- Seasonal Closet Sales

For more information about our Women's programs, contact Melissa Webb at mwebb@embe.org.

Questions or concerns?

We are here to help.



Sadie Mudder
Customer Service & Billing Manager
Phone: 605-299-2511
Email: smudder@embe.org



Sarah Meagher
Director of Curriculum and Licensing
Phone: 605-681-8960
Email: smeagher@embe.org

EmBe

EDUCATION

EmBe Education - Heritage

200 E Willow St, Harrisburg, SD 57032