



Empowering You To Be

EmBe strives each day to be a place of empowerment, where women excel, where children and youth thrive, where families succeed and where the community is enriched by our work.

## Our Values

Developing strong, resilient youth is at the heart of EmBe's mission to enrich the lives of women and families. *FIRST® LEGO®* League introduces STEM learning and teamwork, while inspiring interest in STEM careers, school engagement increases and gain in work-life skills.



## Questions?

EmBe *FIRST LEGO*  
League Coordinator

Jeremy Haugen  
jhaugen@embe.org  
605.336.3660

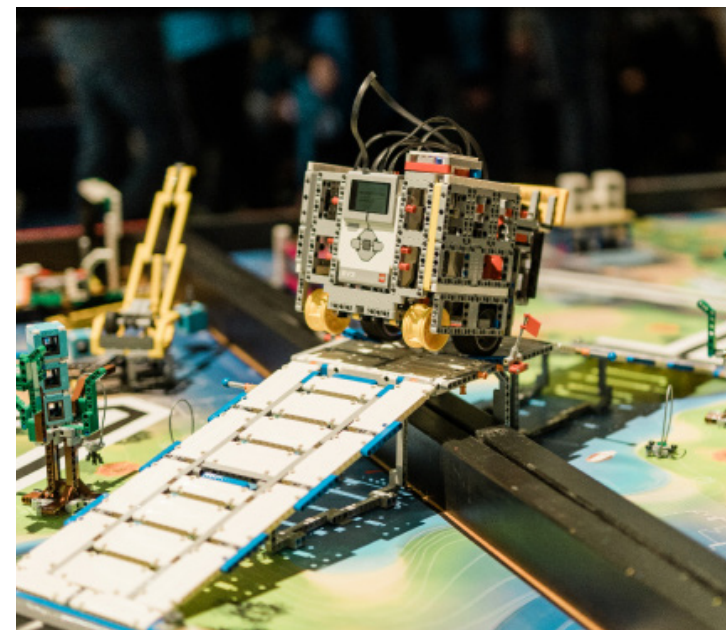


Empowering You To Be

300 W. 11th Street | Sioux Falls, SD 57104  
605.336.3660 | [EmBe.org](http://EmBe.org)



“My child joined *FIRST® LEGO®* League this year and LOVES IT! He said the Qualifier was the best day of his life.”

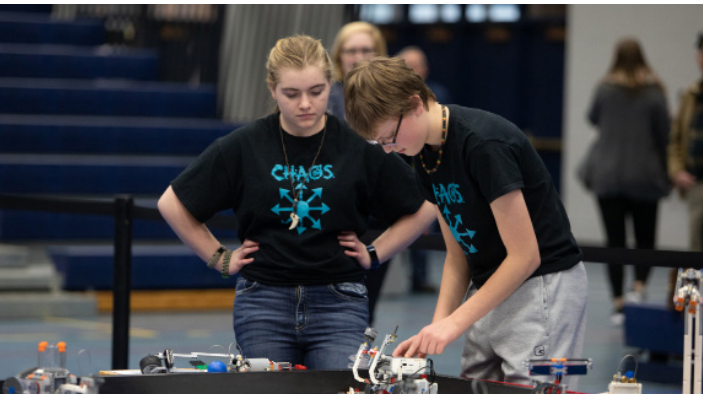


Visit [EmBe.org/first-lego-league/](http://EmBe.org/first-lego-league/) for local information.

Visit [firstinspires.org](http://firstinspires.org) for additional program information.

# Why *FIRST* LEGO League?

*FIRST* LEGO League uses robots to build kids. Teams of kids from all across South Dakota – North Sioux City to Rapid City and many cities and small towns in between – work together to experience the excitement and fun of *FIRST* LEGO League challenges, Robot Games and projects. Team members use their creativity to design innovative solution to real-world problems. The results? Kids who are prepared for real life, learning about problem solving, teamwork, innovative and creative thinking, perseverance and leadership.



Visit [EmBe.org/first-lego-league/](https://EmBe.org/first-lego-league/) for local information.

Visit [firstinspires.org/about/impact](https://firstinspires.org/about/impact) to learn more about *FIRST* programs and how they are making an impact.

Sponsored By:



Sioux Empire United Way  
[www.seuw.org](http://www.seuw.org)



EXPLORE



## It's Never Too Early to Discover STEM.

*FIRST* LEGO Explore is a fun, creative, skill-building experience for kids that helps them learn the value of teamwork, respect for others, and making new discoveries. As a participant (ages 6–10), your child will:

- Design and build a challenge-related model using LEGO components.
- Create a Show Me Poster and practice presentation skills.
- Explore challenges facing today's scientists.
- Discover real-world math and science.
- Begin developing teamwork skills.
- Choose to participate in festivals and showcases.
- Engage in team activities guided by *FIRST* LEGO League Explore Core Values.



CHALLENGE



## Innovative Thinking and Teamwork Build Tomorrow's Innovators.

*FIRST* LEGO Challenge is a fun, creative, skill-building experience for kids that helps them learn the value of teamwork, respect for others, and discovering their own strengths. As a participant (ages 9–14), your child will:

- Design, build, test and program robots using LEGO® MINDSTORMS® technology.
- Research challenges facing today's scientists.
- Apply real-world math and science concepts.
- Learn critical thinking, team-building, and presentation skills.
- Participate in competitions and celebrations.
- Understand and practice *FIRST* LEGO League Challenge Core Values.